

# MyEquipAuctions.com

FARMING DIVISION

February 14, 2018

John Deere - Case IH - Ford - Kubota - New Holland

## EQUIPMENT SOLD DAILY

Industrial • Construction • Agriculture  
BidSpotter.com Is Where It's Sold.

Are you a seller or buyer looking  
to expand your business?

BidSpotter.com is the online  
bidding solution of choice  
for buying quality assets.



★★★★★ **BidSpotter.com** ★★★★★

Expand Your Auction - Sign Up To Bid

☎ 1-855-865-7556

✉ sales@bidspotter.com

# Miller 'N Co. Auction

## UPCOMING AUCTIONS • UPCOMING

*Diversified Farm Equipment Auction, Semi Tractors, Trailers, Tools, and Much More!*

### Thursday, Feb. 22, 2018

### 10:45 AM

### E455 Eastgate Dr., Weyauwega

*Eastgate Dr. is a frontage road south of US Hwy 10/49, across from the airport;  
From Hwy. 10/49 Exit 254 South on Hwy A to Eastgate Dr.*

*Selling...Tractor, Skidsteer, Semi Tractors, Trailers, Service Truck, and More!...*



## 11315 CTH X Newton, WI 50363 • 9

# ns & Appraisals, LLC

## AUCTIONS • UPCOMING AUCTIONS

Special Farm Equipment Retirement Auction For MARK LEMKE  
--including the final Estate Equipment from Crooked River Reg. Herefords, and more--

**Tuesday, Feb. 27, 2018**

**12 NOON**

**6899 Holly Mor Rd., Greenleaf, Wisconsin**

Hwy. 96 at Greenleaf WI east at the Round-a-bout to County Road W, left on W  
to Holly Mor Road, Left to auction location.

**Mark: 920-412-6011**

**Large items will be sold Simulcast LIVE & with Bidspotter online bidding.**



**20-980-4995 • [gregg@millernco.com](mailto:gregg@millernco.com)**

# 11TH ANNUAL HUG INVENTORY REDUCTION AUCTION

Tuesday, February 27th, 2018



**ONLINE BIDDING  
AVAILABLE!**

See our website for more details!  
[www.greenandsons.com](http://www.greenandsons.com)

**740-852-**



**ABSOLUTE AUCTION  
SELLS WITH NO RESERVE**

**TRACTORS:**

AC 180-G  
AC 7040 w/Cab, Ldr.  
AGCO LT75, 4x4 w/Cab, Ldr.  
Case 380 w/Ldr.  
C-IH 5140, 4x4, PS w/Cab,  
New Ldr.  
C-IH 885 w/Cab, Ldr.  
C-IH C60A, 4x4 w/Ldr.  
C-IH Farmall 75C, 4x4  
C-IH Farmall 95, 4x4 w/Ldr.  
C-IH JX95, 4x4 w/Cab, Ldr.  
C-IH MX110, 4x4 w/Cab  
C-IH MX90C, 4x4 w/Cab  
Farmall C w/Mower  
Farmall Cub, Belly Mwr.  
Farmall Super A, Cult, SD  
(2) Farmall Super H  
Farmtrac 535, Low Hours  
Ferguson 40  
Ferguson 40 Hi-Arch  
Fiat 90-90 w/Cab  
Ford 1600  
Ford 1620, 4x4  
Ford 1700  
Ford 3000, Gas w/PS  
Ford 3910 w/Ldr.  
Ford 4000, Gas (Old Style)  
(2) Ford 4610  
Ford 5000 w/Ldr.  
Ford 5600 w/Ldr.  
Ford 5610  
Ford 6000, Commander  
Ford 6640, 4x4 w/Cab  
Ford 6700  
Ford 7000 w/Cab  
Ford 7600 w/Dls.  
Ford 850 w/Freeman Ldr.  
Ford Jubilee w/Ldr.  
IH 130, Cultivator  
IH 504 w/Ldr.  
IH 5088 w/Cab, Dls.  
IH 656, Dsl., NFE  
IH 656D, WFE  
IH 666, Gas, WFE  
IH 674, Dsl.  
IH 674, Gas w/CIH 2200 Ldr.  
IH 766 w/Cab  
JD 1050, 4x4 w/PS  
JD 1070, 2-WD w/Ldr., Mwr.  
JD 2305, 4x4 w/Ldr., Mwr.,  
151 Hours, Like New!  
JD 2555 w/JD 520 Ldr.  
JD 2640, w/JD 146 Ldr.  
JD 2940  
JD 2950  
JD 2955, 4x4 w/Cab, Ldr.  
JD 2955, 4x4 w/Cab, Orchard  
JD 3140 w/Ldr.  
JD 4020, Console w/Ldr.  
JD 4020, Dsl. w/Cab

JD 4040 w/Cab, JD 158 Ldr.  
JD 420W  
JD 4300, 4x4 w/Ldr.  
JD 4440 w/Cab  
JD 4640, Hyd. FWA. "As-Is"  
JD 5055E, 4x4 w/Cab, Ldr.  
JD 5210, 4x4 w/Ldr.  
JD 5225, 4x4  
JD 5300, 4x4 w/Ldr., Backhoe  
JD 5310, 4x4 w/Cab, Ldr., Clean!  
JD 5410  
JD 5425, 4x4 w/Cab  
JD 5425, 4x4 w/Cab, Ldr.  
JD 5510, 4x4 w/Cab, Ldr.,  
4x4 Not Working  
JD 6400, 4x4 w/Cab, Ldr.  
JD 6420, 4x4 w/Cab  
JD 7210, 4x4 w/Cab, Ldr.  
JD 7720 Combine  
Kioti DK55C, 4x4 w/Cab, Ldr.,  
Backhoe  
Kioti LK3054, 4x4, 1405 Hrs  
Kubota B6000  
(2) Kubota BX2200, 4x4 w/Mwr.  
Kubota L175  
Kubota L3710DT, 4x4 w/Ldr.  
Kubota L4310, 4x4 w/Ldr.,  
518 Hours, Very Nice!  
Kubota M6800SD-F, 4x4  
w/Ldr., 1,087 Hours  
Kubota M7040, 4x4 w/Cab, Ldr.  
Kubota MX5100F, 2-WD  
Landini 7880, 4x4  
Landini Ghibli 100, 4x4 w/Cab  
Mahindra 2810, 4x4, 1 Owner  
MF 1045, 4x4 w/Ldr.  
MF 1080  
MF 1155 w/Cab  
MF 231  
MF 245  
MF 255, Dsl. w/Multipower  
MF 2640, 4x4 w/Cab, Ldr.  
MF 35  
TF 7465, 4x4 w/Cab  
MF 8160, 4x4 w/Cab  
MF GC2300, 4x4 w/Mower  
MF Super 90 Dsl.  
NH 6640, 4x4 w/Cab  
NH 8360, 4x4 w/Cab  
NH TM155, 4x4 w/Cab  
NH Workmaster 45, 4x4 w/Ldr.  
White 2-155 2-WD w/Cab  
White 2-180, 4x4 w/Cab  
White 2-75, 4x4 w/Ldr.  
White American 80 w/Cab  
w/Ldr., Hard To Find  
White Field Boss 21

Brillion 23' Hyd. Fold  
Cultimulcher  
Buhler Farm King 15' Triplex  
Finish Mwr.  
Bush Hog 166 12' Rotary Mwr.  
Case IH 8430 Rd Baler  
Claas Rollant 46 Rdbaler  
Crustbuster 15' No-Till Drill  
Curtis Front Angle Blade  
DMI 27' Crumbler  
Eversman 12' 1200  
Landplane Leveler  
(3) E-Z Flow Grav. Bed Wagon  
Ford 5' Flail Mwr.  
Great Plains 7' No-Till Drill  
w/Grass Seed  
Harley 10' Pull-Type Rake  
Hay Conveyor On Transport  
Hesston 5220 Bale Mover  
Hoelscher 10-Bale Accum.  
Hoelscher 10-Bale Grapple  
IH #10 Grain Drill w/Grass Seed  
IH 18' Field Cultivator w/Harrow  
IH 350 10' Wheel Disc  
IH 6000 7-Shank Disc Chisel  
IH 82 Pull-Type Combine  
IH Gd. Driven Manure Sprdr.  
JD 1240 4-Row Corn Planter  
JD 1600 3 Pt. Chisel Plow  
JD 17x7 FBB Drill  
JD 220 18' Hyd. Fold Disc  
JD 24T Square Baler  
JD 270 8' Disc Mwr.  
JD 2-Row Corn Planter  
JD 2-Row No-Till 3 Pt. Hitch  
Corn Planter  
JD 38 Chopper w/Hay Head  
JD 4' Rototiller  
JD 450 Grain Drill w/Grass Seed  
JD 643 6-Row Corn Head  
JD 7000 4-Row Corn Planter  
JD 750 15' No-Till Drill  
JD 756 4 Basket Hyd-Fold  
Tedder  
JD 8300 18x7" Drill, Grass  
JD 936 Moco  
JD F100 20' Field Cultivator  
JD F920h 14' Trans. Packer  
JD Model N PTO Man. Spr.  
JD Running Gear w/Gravity Bed  
Kewanee 21' Field Cultivator  
Kewanee Man. Fold Whl. Disc  
Killbros 1200 Grain Cart  
Landride RTB45108 9' All  
Hyd. Rear Blade  
Mechanical Plastic Layer  
MF 740 7-Shank Disc Chisel  
Miller 20' Hyd. Fold Offset Disc  
New Idea 323 1-R Picker  
New Idea 484 Rd Baler  
New Idea 5212 12' Discbine  
NH 155 Man. Spr. w/Slop Gate  
(2) NH 258 Rake  
NH 352 Grinder-Mixer

**OPEN TO THE P**

**FOR YOUR COMFORT: Majority of items will be aucti**

## Financing Available

Call Ahead For Information and Pre-Approval

**Auction Firm: Green & Sons, Ltd.**

**Auction Firm Manager: Peyton Green**

**Auctioneers: Roger Ford, Cal Kaufman**

**LICENSED AND BONDED IN FAVOR OF THE STATE OF OHIO**

**Excellent Selection  
Of Quality, Hard  
To Find Items**

## 9:00 AM Sharp at Green & Sons

12350 St. Rt. 56 SE. • I-71 At Exit #84  
Mt. Sterling, OH 43143

Check Out Our Website for Full Inventory Listing!

[www.greenandsons.com](http://www.greenandsons.com)

**2205 • 1-888-8GREEN9**

NH 456 Pull Type Sickle Mwr.  
NH 488 9' Haybine 1 Owner  
NH 575 Wire-Tie Sq. Baler  
NH BR740 Rd Baler  
NH BR740A Rd Baler w/Net Wrap  
NH BR740A Rd Baler w/Net

Wrap, Crop Cutter  
NI Tand. Axle Man. Spr. w/Sl. Gate  
Norwesco 1000 Gal Nurse Tank  
Pequea 710 Reel Type Tedder  
Remlinger 30' Harrigator  
Rowse Hay Merger  
Sitrex 5200H 4-Spinner Hyd.  
Fold Hay Tedder, 1 Owner  
Tres Estrellas 10' Box Blade  
Vermeer Bale Wrapper  
Vicon Disc Mwr.

Westco Rock Picker w/Reel  
White 271 21' Rock Flex Disc  
Woods 214 14' Rotary Mower  
Woods 3180 15' Batwing Mwr.  
Woods 9000 3 Pt. BHoec Att.  
Woods Dual Pallet Forks  
Woods RD8400 7' Finish Mower  
Woods RM59 5' Finish Mower

### ATV'S, UTV'S, LAWN MOWERS

Cub Cadet RZT50, 50" Mwr.  
Exmark Lazer S w/72" Deck  
Exmark Quest w/52" Deck  
Exmark Vicking 48" WB Mower  
Grasshopper 225 25 HP  
w/52" Deck, Nice!  
Honda Recon ATV  
JD 22" Wb Snowblower  
JD 430 Dsl. Riding Mwr.  
JD 4x2 Gator  
JD Z445 54" Zero-Turn Mwr.  
Kawasaki Prairie ATV

### CONSTRUCTION:

Bobcat 322 Mini-Exc. w/Cab  
Bobcat Backhoe Attach.  
Bobcat LR6B Rock Rake  
Case 1816B Skid Steer Ldr.  
Case 480-FLL w/3 Pt. Hitch  
Case 580CK Gas w/3 Pt., PTO  
Case 85XT Skid Steer  
Case G-16A 8' Blade  
Cat 252B Skid Steer w/Cab  
Finn B540 Straw Blower  
Gehl 4240E Skid Steer  
IH 3400 Ldr.-Backhoe  
IH TD6 Dozer  
JD 17D Mini Excavator  
JD 320 Skid Steer  
JD 410D 4x4 Ldr. TLB w/Cab,  
(Ext-A-Hoe)  
JD 450E Dozer  
JD 70 Skid Steer  
JD 7775 Skid Steer  
Kawasaki 70Z Series-LI Whl.  
Ldr.  
MF 50 Ldr.-Backhoe  
NH LS180 Skid Steer

Toro Dingo 30" PH Digger  
Toro Dingo 322 Mini Skid Steer  
Toro Dingo 46" Rototiller  
Toro Txxr-19 WB Trencher  
Vermeer V450 Trencher w/  
Backhoe

### ITEMS OFF OF BEN AND MALLORY MASON FARMS:

JD 5093E, 4x4 w/Cab 1-Owner,  
836 Hours, Very Nice!  
JD 1590 10' No-Till Grain Drill  
w/Grass Seed Like New!  
NH 472 7' Haybine  
Pequea 930 PTO Hay Rake,  
Good Condition!  
Case IH 8530 In-Line Sq. Baler  
Kuhn 10-Bale Accumulator  
Exc. Condition!  
NH 329 Manure Spreader

### ITEMS OFF OF CELIA SCHEIDERER FARM:

JD 4450, 4x4, Power Shift  
w/Cab, JD 740 Ldr., Only  
2593 Hours, Very Nice!  
Blue Jet Sub Tiller-LI  
3-Shank Ripper  
Bush Hog 297 7' Rotary  
Mwr., Used Very Little  
Great Plains EWNT 10' No-  
Till Drill w/Grass Seed  
Hardi TR5000 500-Gal  
Sprayer w/Monitor  
IH 370 12' Wheel Disc

### ITEMS OFF OF ALBERT & DENISE FERENBAUGH FARM:

Cagle 500 Gallon Sprayer  
Dunham 10' 3 Pt. Chisel Plow  
Long 1200 3 Pt. Bhoec Att.  
MF 165-Dsl. Not Running  
MF 285  
Miller 10' Offset Disc  
NH 38 Flail Chopper Like  
Brand New!  
Sitrex H90v 10-Wheel Rake  
Woods Bf1500 Bale  
Unwrapper

### AS-IS ITEMS:

#### (Sell At 9:30 Am Outside)

Case 1070 w/Cab 8 Speed,  
Runs Good, Trans Issue  
Case 580-B Ldr.-Backhoe,  
Craftman Zero-Turn Mwr.  
Ford 555 TLB, Possible  
Torque Issue  
Ford 9N, Noise In Engine  
Gehl 2500 Skid Steer  
Golf Cart, Not Running  
IH 574 Dsl., Not Running  
IH 684, Not Running  
IH 806, Dsl., Noise In Engine  
IH Cub 154 w/Mower  
Ingersoll Rand w/Ldr.

JD 950, Runs Good, Fuel  
Pump Issue  
MF 165D w/Ldr.. Not Running  
MF 50 w/PS, Noise In Eng.  
NH 850 Rd. Baler For Parts  
Rhino 15' Rotary Mwr. Rough

### RESERVE ITEMS (SUBJECT TO PRIOR SALE). SELL AT END OF THE DAY AFTER ABSOLUTE ITEMS:

Brillion 15' Cultmulcher  
Buhler 8' All-Hyd. Rear Blade  
Case IH 245  
Case IH 75c, 4x4  
Case IH 75c, 4x4  
Case IH 95u, 4x4 w/Cab  
Cyclone Rake Lawn & Leaf Vac  
Ditch Witch Trencher, BHoec  
Exmark Lazer Z-HP  
Farmall 100 w/Cult., SD.  
Gehl 4240E Skid Steer  
Gehl 383Z Excavator  
Gravely 5260 Mower  
Hesston 5200 Stack Mover  
IH 130 w/Mower  
IH 863 Corn Head  
JD 328 Skid Steer  
JD 4440 w/Cab  
JD 4630 w/Cab, Duals  
JD 5205  
JD 5225, 4x4  
JD 5525, 4x4 w/Cab, Ldr.  
JD 6125R, 4x4 w/Cab  
JD 6210 4x4 w/Cab  
JD 6420 4x4 w/Cab  
JD 670, Blade  
JD 7130 4x4 w/Cab  
JD 7420 4x4 w/Cab  
JD 38 Chopper, 2X Head  
JD 5010 Motor Grader  
Killbros 525 Gr. Bed Wagon,  
Komatsu WA14 Ldr. Bhoec,  
4x4  
Kubota B6000  
Kubota Bx2370, 4x4 w/  
Mower  
Kubota Bx25 Loader-Bhoec,  
4x4  
Kubota RTV1140, 4x4, Dsl.  
Kubota RTV500, Gas  
MF 670 w/Cab  
MF 8140, 4x4 w/Cab  
Morris Magnum Chisel Plow  
NH Br 7060 Rd. Baler, Net,  
NH T5050, 4x4 w/Cab  
Penta 6720 Tdm. Ax Tub  
Grnd.  
Salford 570 RTS 24' Vert. Till.  
Sheepfoot Roller (Pull-Type)  
Steyr 8120, 4x4 w/Cab  
Sunflower 1435, 33' Disc  
Unverferth 42' Rolling  
Harrow



**PUBLIC!**

Loaded off going through our heated building.



# WE DO AUCTIONS.

## ▶ UPCOMING AUCTIONS

### PORTLAND OPEN



**PORTLAND OPEN**  
Portland, Arkansas

#### AUCTION NOTES

THE Portland Open! Tractors, Implements, Trucks and More to one the best auctions in this part of Arkansas! Contact Michael at 501-352-4709 or Bo Dottley at 501-944-0921 now to add your items!

Terms: There will be a 6% Buyers Premium. You must pay day of sale. Cash or check accepted. Buyers not know to Blackmon Auctions must bring a letter of credit from their Bank.

#### AUCTION INFORMATION

- MICHAEL HINZE**
- FEB 15 @ 8AM**
- PORTLAND, ARKANSAS**
- MICHAEL@BLACKMONAUCTIONS.COM**
- 501-352-4709**

### H.L. STEWART JR FARMS RETIREMENT REAL ESTATE & EQUIP



**H.L. STEWART JR FARMS RETIREMENT**  
4015 PARK GROVE, BRINKLEY, AR

#### AUCTION NOTES

4015 Park Grove, Brinkley, AR. - Hwy 79 West of the Hwy 49 & 79 intersection. Selling a very clean group of late model equipment and 900 +/- Acres of farm ground, 1,000,000 +/- bushel grain storage system, 1 yr old 80' x 140' shop and four homes. After many years of successful farming in the Brinkley area Mr. Stewart has decided to retire and pursue other business opportunities.

#### AUCTION INFORMATION

- MICHAEL HINZE**
- FEB 20 @ 9AM**
- 4015 PARK GROVE, BRINKLEY, AR**
- MICHAEL@BLACKMONAUCTIONS.COM**
- 501-352-4709**

### WORLD FAMOUS BACKGATE AUCTION



**PORTLAND OPEN**  
Portland, Arkansas

#### AUCTION NOTES

Backgate auction will start on **Tuesday** this year instead of Monday. We will start taking equipment on Monday, February 12th. The auction site address is State Highway 980, Stuttgart, AR 72160.

#### AUCTION INFORMATION

- MICHAEL HINZE**
- FEB 27-MAR 3 @ 8AM**
- STATE HIGHWAY 980, STUTTGART, AR 72160**
- MICHAEL@BLACKMONAUCTIONS.COM**
- 501-352-4709**



**BLACKMON AUCTIONS, INC.**  
THOMAS BLACKMON REALTY  
PO Box 7464, Little Rock, AR 72217  
**501-664-4526**

#### THE TEAM - CONTACT US!

#### AND - We come to YOU!

**Our expertise remains ONSITE AUCTIONS!**

**BILLY HARTNEDY**  
VICE PRESIDENT/NATIONAL SALES  
AALB # 913  
billy@blackmonauctions.com  
**501-352-4703**

**THOMAS BLACKMON JR.**  
PRESIDENT/OWNER/AUCTIONEER  
AALB # 781  
thomas@blackmonauctions.com  
**501-352-4702**

**TOM BLACKMON**  
OWNER/AUCTIONEER  
AALB # 207  
thomas@blackmonauctions.com  
**501-352-4701**

**MICHAEL HINZE**  
REAL ESTATE/PRINCIPAL BROKER  
Arkansas PB00055586  
michael@blackmonauctions.com  
**501-352-4709**

"This business is about people."

"Every auction is as unique as the person we are working for."



# DEMOTT

A U C T I O N

Your Source for Sold!



**IMMOKALEE PRODUCE SHIPPERS FARM**

**Saturday, February 24, 2018 - 9 AM**

*Immokalee, FL*

• TRACTORS • CONSTRUCTION • FARM EQUIPMENT • POWER  
UNITS & PUMPS • TRUCKS & BUSES • MISCELLANEOUS

**Click Here To View Auction Online!**



**22ND ANNUAL WINTER AUCTION**

**Saturday, March 10, 2018**

*Moultrie, GA*

**Click Here To View Auction Online!**



**16TH ANNUAL SPRING AUCTION**

**Saturday, March 24, 2018**

*Iron City, GA*

**Click Here To View Auction Online!**



**23RD ANNUAL CITRUS, RANCH & PRODUCT SPECIAL AUCTION**

**Saturday, April 21, 2018**

*Okeechobee, FL*

**Click Here To View Auction Online!**

**FOR MORE INFORMATION & UPCOMING AUCTIONS**

**Visit [www.demottauction.com](http://www.demottauction.com)**

229.985.4565 | 1894 Sylvester Hwy, Moultrie, GA 31768 | [info@demottauction.com](mailto:info@demottauction.com)

Terry DeMott, Sr - Auctioneer | John DeMott - Auctioneer

GA #AU002554-AU003866- AUC0002439 - NC #7411 - TX #17289 -SC #4587-4076



# FEBRUARY 19 - 20 -21, 2018

## 26th Annual

# WESTERN KANSAS

# CONSIGNMENT AUCTION

**FARM EQUIPMENT • ATV'S • MISC.  
PARTS & REPAIRS • & MUCH MORE!  
GARDEN CITY, KANSAS**

(Blizzard date: Fri. / Sat. / Sun. - FEBRUARY 23- 24 - 25, 9:AM)

LOCATION: Hiway frontage pasture in front of the Garden City Regional Air, Scott Auction Consignment Lot, 9 mi. East of Garden City, KS on US Highway 50/400.

### --ORDER OF SALE STARTING DAILY 9 AM CT--

**MONDAY:** Shop equipment, Tools, Parts, Repairs, Livestock equipment and some smaller old machinery sell. - (Shop equip, tools and small items will be sold inside Building #2 South of our normal auction area. May be cold but not windy in the building

**TUESDAY:** Large late model Farm equipment, Irrigation eng's & pipe, Construction equipment, RV's/Campers, ATV's, Lawn tractor / mowers, and smaller ATV/Mower Trailers sell.

**WEDNESDAY:** Large industrial equipment, Tractors, Trucks, Pickups/SUV's, Large Trailers, Combines, Swathers and related equipment sell.

TERMS: CASH, Checks with Positive ID. 1% BUYERS FEE WILL BE CHARGED ON ALL SALES - Additional 2% Buyers Fee on successful internet bids and absentee bids.

ALL ITEMS MUST BE REMOVED BY MARCH 10th, 2018

- LOADING ASSISTANCE UNTIL SAT., MARCH 3rd, 2018

LUNCH SERVED: PARTY-Q CONCESSIONS & PAULA'S FUNNEL CAKES

NO WARRANTIES EXPRESSED OR IMPLIED, ANNOUNCEMENTS

TAKE PRECEDENCE BUYERS ARE RESPONSIBLE TO DETERMINE

THE CONDITION OF ITEMS PRIOR TO BIDDING

For information on consigning contact Scott Auction  
CONSIGNORS TERMS AND COMMISSIONS

**SCOTT AUCTION'S ABSENTEE /  
ON-LINE BID POLICY**

3280 W. Jones Ave. / P.O. Box 398, Garden City, KS 67846-0398

**620-276-8282 • 800-466-8214**

**E-mail - [auction@scottauction.com](mailto:auction@scottauction.com)**





# CONSIGNMENT AUCTION

## THURSDAY - FEBRUARY 22, 2018

### 9:00 AM CST

\*snow date: February 27th

Sale Location: Cornlea, NE - Junction Hwy 81 & 91 - 5 miles west on 91, South to Cornlea

**BID LIVE ONLINE - Register on [www.wegenerimplement.com](http://www.wegenerimplement.com) • NOT ALL ITEMS selling online**

**Running 2 Rings All Day • All equipment will be mixed, be on time. NOTE: MUST BE REMOVED WITHIN 30 DAYS**



**COMBINES**  
 JD 7720 Titan II, 4100 hrs, sn#625516  
 77 JD 6600, 4756 hrs, SN#258568H  
 JD 6620  
 '93 JD 9500  
 '95 JD 9600, bad engine  
 '91 INT 1680  
 '80 INT 1460  
 '11 John Deere 9770STS

**TRACTORS**

2015 CIH 250 Magnum, Mfwd, big hyd pump, duals, heavy duty draw bar, wide fenders, frnt fenders, AS ready, 19 Speed Econo, 1030 hrs, sn#ZERF09109  
 Ford/NH 9030, bi-directional, 4x4 w/Loader & grapple  
 JD 4430 PS, sn#4430P046133R  
 '04 JD 8420 MFD, duals, wts, 480x46 rubber, 12000 hrs.  
 '81 JD 4640, 2wd, Quad Range, 11.00-16SL, duals: 460/85R38, 5656 hrs., SN#4640H 009117, ONE OWNER  
 '86 JD 4450 QR, 2wd, duals, 8550 hrs, SHARP  
 JD 4555 mfd, full wts, duals, 5800 hrs.  
 JD 4650, 1000 pto, 3pt w/ qh, 20.8x42 w/ duals, 5915 hrs., SN#RW4650P016354  
 JD 8100 PS, 2wd, duals, 10500 hrs  
 Ford/NH 9680, 4x4, 710x38 metric, 3592 hrs., sn#D101077  
 Ford 5610 Diesel w/Koyker K2 loader  
 CIH Steiger 435, PS, 3pt PTO, triple duals, 2700 hrs  
 Case 2094  
 '69 JD 4020, rebuilt engine 400 hrs.  
 '81 JD 4440 QR  
 JD 4630 w/duals  
 2 - Case 2290, bad transmissions  
 Case 2590 w/duals  
 '16 JD 6155R, MFWD, IVT, 3pt pto, 480/80R42, 2006 hrs., warranty till April 2019

**LOADERS & CONSTRUCTION**

Hyundai HL740-7 w/forks, 5.9 Cummins, 12 Valve, 2-3/4 yd bucket, QT, 3rd valve, 7700 hrs, sn#1FQ11630  
 '04 Cat 914G Payloader  
 '84 JD 510D backhoe  
 NH DC150 Crawler w/4-way dozer blade & ripper, sn#100015  
 Michigan 280C Payloader dozer  
 Cat 977H Loader Dozer  
 Bobcat 763 skidloader, diesel, bucket & forks  
 JD 158 w/4240 mounts  
 Buchli B600 scraper  
 JD 12' Dozer Blade  
 Bison NVHL300 Blade 6 way  
 Wemco 12' Box Scraper, NEW  
 2 - Lowe Hyd Auger 750 w/12" bit, NEW  
 Lowe Hyd Auger 750 w/9, 12 & 15" bits, NEW



Stout Brush Grapple 66-9, NEW  
 Stout Brush Grapple 72-8, NEW  
 Stout Brush Grapple HD72-4 close tine, NEW  
 2 - Stout Brush Grapple XHD 84-6, NEW  
 Stout Grapple Bucket HD72-FB, NEW  
 Stout Rock Bucket Grapple 72-3, NEW  
 Stout Rock Bucket/Brush Grapple Combo HD72-3, open-end, NEW  
 Stout Tree & Post Puller, NEW  
 Stout Excavator Hitch Plate, NEW  
 Stout Solid Weld-On, NEW  
 Stout Walk Through 48" Pallet Forks, NEW  
 Stout Add-On Fork Grapple, NEW  
 Stout Bale Spear-Round, NEW  
 Stout Stump Grinder SG13-R, NEW  
 Stout 72 Material Bucket, NEW  
 2 - Tomahawk 66" smooth bucket, NEW  
 5 - Tomahawk Stump Bucket, NEW  
 Tomahawk 78" Stump Bucket, NEW  
 Tomahawk Quick Tach Mount Plate, NEW  
 Tomahawk 78" Snow/Mulch Bucket, NEW  
 Tomahawk HD Hay Spear, NEW  
 Tomahawk 72" Rock Bucket Grapple, NEW  
 2 - IA 12' box scraper, NEW  
 IA 140R 14' Hyd 6way Blade, NEW  
 IA 7' Box Scraper - NEW  
 IA 14' Hyd 6way blade - NEW  
 2 - Easy Man tree/post puller - NEW  
 2 - Easy Man 72" bucket - NEW

**CORN & GRAIN HEADS**

'16 MacDon FD75-35', jd mounts, sn#288669  
 '15 MacDon FD75-40', jd mounts, sn#278528  
 '99 JD 894, hyd, deck plates, lvl land drives, SN#680710  
 '97 JD 894, SS wear strips  
 '13 Claas 516, 16R30, hyd deck plates, knife rolls, row guidance, 500/700 series hookups, SN#91501525\*  
 '05 CIH 2208  
 '06 Harvestec 431F2 12R30, folding  
 JD Bish Built 1253A, Like New  
 '87 CIH 810-24" Rigid  
 NH 974, 6R30  
 JD 925F w/Crary Air Reel  
 JD 444, poly  
 3 - JD 444  
 4 - JD 443  
 JD 643, poly  
 3 - JD 643  
 CIH 1020-20', 25', 30' flex  
 CIH 1063, 1083  
 '09 JD 608C w/3 sensor HDD, 8 Row Stomper Kit  
 2 - JD 893  
 JD 918, 920, 925F, 930 Flex  
 2 - JD 454A  
 JD 220, 20" platform  
 JD 454 Row Crop



JD 100 Series, 13'  
 2 - IA 430 Head Trailer - NEW  
 IA 835 Head Trailer - NEW  
**GRAIN HANDLING EQUIPMENT**  
 Farm King 10"x70" auger w/swing hopper  
 3 - Grain Cleaner  
 J&M 535 bu gravity wagon  
 Brent 544  
 Koyker swing hopper  
 Westfield slide under hopper  
 Westfield 1081 auger w/swing hopper  
 Batch driver  
 '14 Brent 1396 grain cart, scale, tarp, NICE  
 Neco Grain Spreader  
 Sudenga seed tender  
 Sukup grain cleaner  
 Feterl 3 auger drive over hopper  
 66" x 8" Grain Auger  
 '03 Auger hopper 8"  
 Parker 325bu gravity wagon  
 Parker 200bu gravity wagon

**HAY EQUIPMENT & MOWERS**

2014 Vermeer 6055M Rd baler, 8500 bales, net wrap  
 '96 Pro Ag Designs 12SR, 3x3 large square bale mover, auto align  
 '01 JD 956 MoCo Windrower, 14.5'  
 '97 Hesston 4755, 3x3 large square baler, 62350 bales  
 '02 Vermeer R23A Rake, hydraulic driven, ONLY 150 acres on new teeth  
 '06 JD 567 Rd Baler, Net wrap, 568 pickup conversion, 10875 bales, sn#E00567X326814  
 Farmhand 3 grapple hay fork  
 JD 700 twin rake  
 Kelderman 10 wheel rake  
 NH 1000 bale mover  
 NH 276 sickle mower  
 Rhino 10' shredder  
 2004 MacDon 5020 windrower, 14', new sickles, guards & hoses

**SPRAYERS & FERTILIZER**

Homemade 23 Shank liquid Nitro bar, 3pt mount, w/1300 gal poly tank on cart  
 JD 4920 tank & boom, Removed from a 2007 4920 sprayer, 1200 gal stainless tank, 90' booms, 5-way nozzle bodies, stainless inductor system and rinse tank included, pump  
 Best Way Sprayer  
 Schaben 3pt sprayer 300 gallon, 60' booms, flow control

**PLANTING EQUIPMENT**

JD 7000-4R, dry fert, monitor  
 White 5700 - 15/15" w/coulter caddy, NO MONITOR  
 JD 1760-12R flex, liquid fert, flex bar, row shut off



JD 1760-12R30, fert, flex bar  
 GP 15' Drill w/Caddy  
 CIH 6200 drill, pulltype Make:Case IH Model: 6200  
 JD 7100 14R bean  
 JD 1590-15' drill  
 11 - JD MaxEmerge 2 lids, NEW  
 White 5100 - 12R30  
 (32) JD True V openers  
 (32) JD Gauge wheel tires  
 (32) JD Gauge Wheel Arms  
 JD 7000, 4R36, liquid fert, dry insect

**TILLAGE**

Buffalo 4630 BR36 folding  
 IHC 480 disk  
 CIH 4600-25' Field Cultiv  
 Glenco 12' disk ripper  
 3pt 6' tiller  
 JD 635-22' rock flex  
 JD 650-24'  
 CIH 496-25'  
 JD 630-25'  
 Sunflower 1531-28'  
 IHC 475-14'  
 JD 960-24'  
 JD 980-26', 30'  
 JD 915 Ripper 7 shank w/pull hitch  
 JD 2700, 8 btm plow, 18" blades  
 2 - INT 470, 17.5' disk  
 CIH 14 Ripper, 5 Shank  
 JD 856 Cultiv 12/30, 3pt, single sweep, gaug thumper ground driven pump, setup for side dressing  
 INT 496 tandem 19', noble harrow, 21-1/4" disk blades  
 10' disk, single gang  
 Blue Jet 17 Knife Anhyd Rig, double Hiniker heat exchanger, monitor & controls, New closing disk  
 Blue Jet 5-Shank Sub Tiller II  
 Anhyd Applicator 27', 9 Shank, 36" spacing  
 Harrow 7 Section, 42'  
 DMI 45' crumbler

**LIVESTOCK EQUIPMENT**

'05 IHC 7300 Roto Mix 620, DT466 Auto, 5 speed, single axle, 69550 miles, new rebuilt motor less than 500 miles, w/Roto Mix 620-16 feed wagon w/scales; SS liner, paperwork on engine  
 Artsway feedwagon w/scale  
 Henke 240 feedwagon w/scale  
 Knight 3036 feedwagon



JD 7000, 6R30 planter w/liquid  
 NH 973-18" Flex  
 NH 974, 6R30 Cornhead  
 CIH 4300-24' Field Cultiv  
 IH 496-22' w/harrow  
 AC Chisel 11-Shank  
 MC 18" Stalk Shredder  
 Century Sprayer, pull type, 30' booms  
 Schuler SRM263 w/scale  
 Schultz Manure Spreader  
 Hydraulic Hog Cart  
 2 - Spread-All 20 Ton spreaders  
 Gehl 100 grinder w/scale  
 Gehl 95 grinder, like new  
 New Idea 362 spreader  
 IA 625 Bale Wagon, NEW  
 IA 625 Bale Wagon, NEW  
 12 - (10) 6-Bar x 20' Cont Panels, NEW  
 6 - (10) 5x12 Portable Panels, NEW  
 3 - (4) 8-bar 24' Portable Livestock Panel, NEW  
 2 - (6) 8-bar 24' Portable Panels w/12' gate, NEW - Heavy Duty  
 1 - (4) 8-bar 24' Portable Livestock Panels, NEW Heavy  
 2 - (6) 8-bar 24' Portable Panels w/8' gate, NEW - Heavy Duty  
 2 - (10) HD 24' Cattle Panels w/4' gate  
 Gehl 170 feedwagon w/scale

**TRUCKS & TRAILERS**

'11 Maurer 39' grain trailer, ag hoppers, LIKE NEW  
 '11 Titan 30'+5' Gooseneck  
 '12 Wilson 50"x66", triple axle, elec tarp & traps, LIKE NEW  
 '96 Merritt triple axle 66' sides  
 '93 Timpte 42"x66", spring ride, non ag hoppers  
 '12 Kaufman 24' flatbed  
 '98 Clipper camper, bumper hitch  
 '12 HMI 20' flatbed 16'+4"x102"W

**CONTINUED ON BACK SIDE**

**LOAD OUT:**  
**M-F • 8 a.m. to 5:30 p.m.**  
**Sat. • 8 a.m. to 12 Noon**

**TAKING CONSIGNMENTS UNTIL FEBRUARY 20th!**

**PRE-APPROVED FINANCING or LEASING CALL LORI AT 402-923-1160**

**MUCH MORE TO ARRIVE BY SALE DAY!**

**OWNERS NOTES:** We're offering a great line of quality late and early model equipment. This is a partial listing as we are expecting a lot more machinery by sale time. If you don't see it, give us call. We provide good loading and unloading facilities with trucking available to and from sale including the entire US, Canada and Mexico. Lunch on Grounds: Lindsay Holy Family Booster Club.

**ITEMS LISTED ARE SUBJECT TO PRIOR SALES, AS WE BUY, SELL AND TRADE DAILY.**

**TERMS & CONDITIONS:** All potential buyers must register at the office. All items are sold "as-is" with all faults and defects. Must be paid for in full on sale day with cash, cashier check, or personal or company check, if accompanied with a bank reference letter. NO DRAFTS ACCEPTED. Buyer responsible from time of sale and will not hold MWI responsible for any liability from theft, accidents or fire. Items purchased and not picked up after 60 days will be retagged to buyer and sold. Unknown or first time consignors must furnish MWI a bank reference letter prior to tagging-in merchandise. Items must be free and clear of any encumbrances of any and all types. MWI will not price protect your merchandise in any fashion, regardless. All sales must come through MWI office. Announcements made DAY OF SALE supercede all printed material. MWI nor the Auctioneers will not be responsible for hours or misrepresentation of any kind on all equipment.

**For More Information, Call: MICHAEL WEGENER IMPLEMENT, INC.**  
 CORNLEA, NEBRASKA  
 Office: 402-923-1160  
 Michael: 402-920-0168  
 Website: [www.wegenerimplement.com](http://www.wegenerimplement.com)  
 E-mail: [wegenerimplement@gmail.com](mailto:wegenerimplement@gmail.com)  
 Nick: (402) 920-0006

# Farm Machinery Auction

Monday Feb. 26th, 2018

Start Time: 10:30am

Sale Site: From Hazelton KS; Take the Tri City Road 2 mi. N. & 1 ½ mi. W. on Gerlane Road. From Sharon KS, take the Tri City Road 8 mi. S. then 1 ½ mi. West on Gerlane Road. Most of equipment was shedded.

Hours & mileage on equipment/vehicles is approximate. Inclement Weather Date March 12<sup>th</sup>.

Viewing Dates: Feb. 12<sup>th</sup> and Feb. 24<sup>th</sup> from 10:00 am to 4:00 pm



2014 JD 9360R Tractor, 4x4, duals, Manual shift, 4 remotes, Starfire 3000 Receiver, ONLY 235 ACTUAL HRS.



2014 JD 9360R Tractor, 4x4, duals, Manual shift, 4 remotes, Starfire 3000 Receiver, ONLY 425 ACTUAL HRS.



2014 JD 7210R, Tractor, MFWD, with JD H 480 Loader, 8' bucket, pallet forks, 3 Pt. PTO, ONLY 240 ACTUAL HRS.



2014 JD Model 1910, 350 bushel Tow Cart for No Till Drill



2014 JD 1890 No Till Drill, 40', 7 ½ inch spacing,



2010 Sunflower 9421 Drill, 24x2x7.5"



2006 IHC Truck 4300 16'x40" box, steel floor, roll tarp, Auto trans 22.5 Tires, Roll Tarp



1999 IHC 4700 Truck, diesel eng, 6 speed plus, 16'x40" steel floor, 11R 22.5 tires 299,250 +/- mi.



2006 F450, XLT Super Duty 9'6" bed, Tool boxes, 12V fuel tank, Auto trans, Front Grill guard, duals



2007 F350 Diesel, Auto Trans Knapheide service body, Miller welder & Champion air compressor

**Trucks, Farm Equipment, Trailers ETC:** IHC Truck V8 engine, 15.5'x40" box, heavy axles; 1961 GMC 4000 Truck, V6, 15'x39" box, with Westfield drill fill auger; **Land Pride** DT 55 Ditcher, 3 Pt. PTO (540); **Oliver** plows 5 bottom & 4 bottom with hitch; **Crustbuster** offset 16' disc; Kent Springtooth, 36' harrows, 2 row; (2) **Massey Ferguson** 16-10, hyd. Drills/2 drill hitch; **JD/Noble** 49' springtooth; **Mayrath** Auger, 8"x53', PTO; **Mayrath** Auger 6"x21', electric motor, chain hoist; (3) fuel tanks on skids with pumps; canoe trailer; **Arctic Cat 400**, 4x4, 4 wheeler, 1,110 +/- mi. **Westfield** drill fill auger; (2) compartment bolt bins with many sizes & variety of bolts, screws; Tools: Campbell Hausfeld air compressor 4 HP, HS78; **Lincoln** AC 225 arc welder; Shop press with jack; Quatro 40 power washer; Acetylene welder with cart; Lundell Floor drill press; **Schumacher** SE 40ZZ battery charger; Troy Built gas 4 cycle blower; (3) shop fan; **Craftsman** tool boxes; screwdrivers; **sockets**; pliers; nippers; pry bars; hand wrenches; hammers; vice grips; ¾ sockets; come a long; log chain double end grinder; Impact wrenches ½" to ¾"; High lift jack; ATD 14" cut off saw; **Ryobi** 6" bench grinder (new); **Roughneck** 12 V portable fuel transfer pump; Sale bill online at [www.hammauction.com](http://www.hammauction.com)

**SEE MORE ON AUCTIONEERS PAGE**

Driver's License Required & Letter of Credit on more Expensive Items.

John Hamm/Auctioneer



107 NE State Rd 61  
Pratt, KS 67124  
620-672-6996

[www.hammauction.com](http://www.hammauction.com)

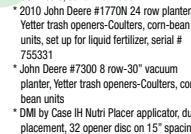
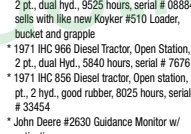
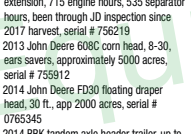
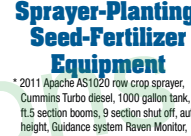
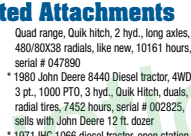
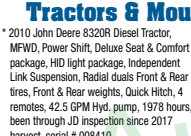
# ORCUTT FAMILY PARTNERSHIP RETIREMENT FARM AUCTION

**Thursday, February 15, 2018 • 10:00 A.M.**

**Location: 1005 Road 1900 Guide Rock, Nebraska. 3 miles west of Jct. of Hwys. 78 & 136, then 3 miles north and ½ west.**

*Red's Country Catering will be serving lunch. Free coffee prior to 10:00 A.M. courtesy of Montgomery Auction & Realty.*

After farming Hawkins land for 40 years Rick & Judy are retiring. This is one of the most exceptional nice, clean well cared for line of equipment to sell this spring. Live onsite bidding or Internet bidding with (Auctiontime logo) Starting at 12:30 P.M. on items mark with a (\*) astrick. To view internet items and sale order go to: [www.montgomeryauctiononline.com](http://www.montgomeryauctiononline.com) to view cataloged items and details. **PLAN TO ATTEND!!!!**



## Combine-Heads-Grain Equipment

- \* 2013 John Deere S660 STS Combine, 3 speed Electrical shift, Premium Cab, Autocrat Ready/Harvest Monitor, Heavy Duty Hi Torque VSD, S-Ser DP both Adj chaffer, 6.9M<sup>3</sup> 1 PP (22.5 ft.) unloading auger, Straddle Radial duals, Rear Bin extension, 715 engine hours, 535 separator hours, been through JD inspection since 2017 harvest, serial # 756219
- \* 2013 John Deere 608C corn head, 8-30, ears savers, approximately 5000 acres, serial # 755912
- \* 2014 John Deere FD30 floating draper head, 30 ft., app 2000 acres, serial # 0765345
- \* 2014 B8K tandem axle header trailer, up to 35 ft. header, brakes, lights, used less than 250 miles
- \* 2009 J&M 750-18 grain cart, big 1000PTO, tarp, lights, 620R5X42 radial tires, serial #409550
- \* A&L #456 Grain Cart, 1000 PTO, tarp, serial #A92550
- \* 2015 Westfield 13" drive over grain conveyor, hyd. drive, like new, year 2 serial number # 235834
- \* 2015 Westfield WR100-31 load out auger, 7 HP electric motor, hopper and dolly wheel, like new

## Tractors & Mounted Attachments

- \* 2010 John Deere 8320R Diesel Tractor, MFWD, Power Shift, Deluxe Seat & Comfort package, HID light package, Independent Link Suspension, Radial duals Front & Rear tires, Front & Rear weights, Quick Hitch, 4 remotes, 42.5 GPM Hyd. pump, 1978 hours, been through JD inspection since 2017 harvest, serial # 008410
- \* 2002 John Deere 8420 Diesel tractor, MFWD 40 K Independent Link Suspension, 60 GPM Hyd. pump, Cab w/DW command/ Act seat, Auto Trak ready incl Plug & Play, Power Shift, HID light package, Quick hitch, 5 remotes, Front & Rear weights, 480/80X50 Radial duals, 5660 hours, been through JD inspection since 2017 harvest, serial # 001794
- \* 1984 John Deere 7700 Diesel tractor, 2 WD, Power Quad, Quick Hitch, front weights, 3 hyd., 42" rubber, 4560 hours, serial # 006862
- \* 1990 John Deere 4455 Diesel tractor, 2 WD, Powershift, Quick Hitch, 3 hyd., front weights, Axle mount duals, 480/80X38 Radial tires, 10,300 hours, serial # 007204
- \* 1981 John Deere 4440 Diesel tractor, 2 WD, Quad range, Quick Hitch, 2 hyd., long axles, 480/80X38 radials, like new, 10161 hours, serial # 047890
- \* 1980 John Deere 8440 Diesel tractor, 4WD, 3 pt., 1000 PTO, 3 hyd., Quick Hitch, duals, radial tires, 7452 hours, serial # 002825, sells with John Deere 12 ft. dozer
- \* 1971 IHC # 1066 diesel tractor, open station, 2 pt., dual hyd., 9026 hours, serial # 08864, sells with like new Koyker #310 Loader, bucket and grapple
- \* 1971 IHC 966 Diesel Tractor, Open Station, 2 pt., dual Hyd., 5840 hours, serial # 7676
- \* 1971 IHC 856 Diesel tractor, Open station, 3 pt., 2 hyd., good rubber, 8025 hours, serial # 33454
- \* John Deere #2630 Guidance Monitor w/ activations
- \* John Deere #2600 Guidance Monitor w/ activations
- \* 2 John Deere Starfire receivers
- \* Ag Leader guidance system
- \* 4 Motorola business band radios and antennas

## Sprayer-Planting-Seed-Fertilizer Equipment

- \* 2011 Apache ASI020 row crop sprayer, Cummins Turbo diesel, 1000 gallon tank, 90 ft.5 section booms, 9 section shut off, auto height, Guidance system Raven Monitor, 852 hours, serial # 9110357
- \* 2010 John Deere #1770N 24 row planter, Yetter trash openers-Coulters, corn-bean units, set up for liquid fertilizer, serial # 755331
- \* John Deere #7300 8-row-30" vacuum planter, Yetter trash openers-Coulters, corn-bean units
- \* DMi by Case IH Nutri Placer applicator, dual placement, 32 opener disc on 15" spacing, set up for Ag Leader Guidance-Monitor
- \* John Deere # 8200 8" 20 spacing grain drill, flute feed, hyd. lift
- \* Brillion 8 ft. roller-packer seeder, 3 pt.
- \* 2013 Meriden "Seed Titan" model 2SE seed tender, scales, Honda electric start motor, holds 2 boxes
- \* Friesen "Seed Titan" seed tender, holds 2 boxes, Honda motor, has inoculator
- \* 2011 Wylie model W1272 EZ low 1200 gallon bumper pull nurse trailer, Heavy duty 7000# axles, brakes, lights, fenders, Honda 5.5 ci pump, hoses, platform for seed or chemical tote, nice, used less than 300 miles
- \* Wylie 3000 Gallon cone bottom portable fertilizer storage tank, Honda motor & pump
- \* Schabden 3000 gallon cone bottom portable fertilizer storage tank, Briggs "Intek" motor & pump
- \* 2 Schabden 1000 gallon tandem nurse tank-trailers, Kohler motors & pumps
- \* Snyder 1000 gallon tandem axle nurse tank trailer, Tecumseh motor & pump

## Swather-Baler-Hay-Livestock Equipment

- \* 2009 Massey Ferguson 963S Windrower w/9192 16ft. rotary head, cab, air, 7.4 liter Sisu Diesel engine, 1380 engine hours, serial # 46102
- \* 2010 John Deere #568 mega wide round baler, bale kicker, hyd., pickup, big tires, net wrap, 1000 PTO, 14,744 bales
- \* IHC #430 twine tie square baler, 540 PTO, shedded
- \* H&S 14 wheel V-hay rake, hyd. fold, wind quadrants
- \* Highline 7 bale Retriever, dual hyd. motor drives, walking tandem axles
- \* Double bale fork, 3 pt.
- \* 2 single bale forks, 3 pt.
- \* John Deere #540 Hydra-push manure spreader, fiberglass lined, 540 PTO
- \* Henke #180 mixer-feeder wagon, scales, newer liner
- \* Big Valley Manuel squeeze chute, self-catch head gate
- \* Nebraska Registered Brand, 6 locations, 10 over ¼ circle, transfer paper included
- \* 3-4 wheel bale feed wagons
- \* 10 Belmont 10 ft. Corral panels
- \* Several wire hog/sheep panels
- \* 700 gallon water tank on 4 wheel gear
- \* Hesston 30 stack mover, AS IS
- \* 20 ft. bale rack for truck bed

## Semi's-Pickups-Trailers

- \* 2 1996 IHC #920 Conventional Semi-Tractors, Cummins N-11 engines, 10 speeds, 4-10 rear ends, good 22.5 LP tires, VIN # 2HSFMHR17C073261 has 690,000 miles, VIN # 2HSFMHR17C073263 has 692,000 miles
- \* 2 2009 DMF 36 ft. steel grain trailers, Ag hopper/chutes, tarps, VIN # 109SH36229A372133 and 372132
- \* 1999 Chevrolet 2500 Reg cab ¼ ton pickup, 4X4, V-8, Auto, Flatbed, good tires, 196,000 miles
- \* 1996 Chevrolet 3/4 ton Reg cab pickup, 8 ft. box, V-8, Auto, good tires, 160,000 miles
- \* 1998 OTM 28 ft. Gooseneck flatbed Tandem axle flatbed trailer, oil bath 10.00D# axles, dual tires, 24 ft. plus 4' fold down-beavertail, ramps, tool box, spare, wood floor
- \* 2008 Buck Dandy Gooseneck 7X20 flatbed trailer, 2-7000# axles & 8 bolt wheels, steel deck, ramps
- \* 1991 Eagle 8X16 tandem axle bumper car trailer, ramps, 2" ball, lights, and good 7-00X15 HD tires
- \* 1994 DMF 6X20 gooseneck stock trailer, 7000# axles, 8 bolt wheels, center gate, mostly hauled sheep
- \* 1980 Traveling 8X16 bumper pull stock trailer, NO TITLE

## Shop Tools & Equipment-Repairs-Supplies

- \* Coleman Power mate 5.5 HP gas air compressor, off 1990 pickup
- \* Continental 3 ton shop press
- \* LP-Acetylene torch outfit on cart, complete
- \* Pacific 7500 watt diesel generator, electric start, used very little Watt gas generator
- \* 275 Gallon oil tote on stand
- \* Manual tire machine
- \* Air tools
- \* 3 New cornhead snouts for JD 893
- \* 2-3 trailer loads of shovel-hammers, bars, sockets, Open-box end wrenches hand tools, specialty tools and all kinds of testers and repair tools, 2-3 trailers loads of machinery parts & repairs, pipe & hose-fittings repairs, Hyd. repairs and more. Rick had 2 shops & 2 pickups setup to attend his well-maintained line of equipment, and plenty of supplies also.

## Farm Machinery & Implements

- \* Krause model #4980 Tandem 28 ft. folding Disc, 9" spacing, 22" front, 20" rear blades, good condition, serial # 1842
- \* 1995 Sunflower model #3040 28 ft. Fallow Master, pickers, good 20" sweeps
- \* Hiniker #4000 stock shredder, 6-36 rows, 1000PTO, 3 pt.
- \* Hiniker # 5000 6-36 NO-Till Cultivator, 3 pt.
- \* Hiniker # 6000 6-36 No-Till Cultivator, 3 pt.
- \* Orthon 8-30 Hiller, Hawkins units, 3 pt.
- \* Geneva Welding Pivot track closer w/rollier, 3 pt.
- \* York S Shank Mulcher/Ripper w/Coulters, 3 pt., good
- \* Massey Ferguson #620 Folding Tandem 21 ft. Disc, 9" spacing 21" front 22" rear blades, serial # 867
- \* IHC 14 ft. pull type chisel, points
- \* 2 Big Ox Rippers/Sub tilters, 3 pt., 1-shank, 1 for parts
- \* IHC 5 bottom semi-mount plow
- \* Patriot Stubble Blower, front mount, hyd. lift, off 8320R
- \* Rhino TW84 7 ft. 3 pt. shredder, 540 PTO 3 pt. head mover
- \* 7X7 tool bar
- \* 4 IHC nurse tanks, need recertified
- \* 300 Gallon pull type sprayer
- \* Several fuel tanks and pumps, some on carts
- \* IHC Sickle mower, V-Ditcher, and several other pieces of machinery for scrap or repairs

## Skid Loader-Dirt Equipment

- \* 2004 John Deere # 270 diesel skid loader, 2 speed, auxiliary hyd, 78" bucket and app 1000 hours, serial # B929585
- \* Danhauser #1025 hyd. post hole digger w/ skid loader attachment, 9" & 12" augers
- \* Montezuma Tree saw for skid loader, w/ stump treater
- \* Root/Rock/Stamp grapple fork for skid loader
- \* Pallet fork for skid loader
- \* 2010 Garfield model #1400 moldboard blade, 14 ft., Heavy Duty, 3 way Hyd., like new
- \* Ashland 6 yard dirt scraper, 20" truck tires
- \* Brown 10 ft. box scraper
- \* NW # 272 XHD 9 ft. Rear Blade, 3 pt., 3 way hyd.
- \* Danhauser 3pt. Post Hole Digger, 9" & 12" augers
- \* Tandem axle belt feed pivot track filler, hyd. drive

## Selling with 2 Auction Rings All Day!!

**Loader Available, All Items Must Be Removed By March 1<sup>st</sup>**

## ATV'S-Mowers & Related

- \* 2012 Yamaha Rhino 4X4 side by side ATV, doors, front winch, Blue, 482 hours, 4224 miles
- \* 2009 Honda Rubicon 4X4 4 wheel ATV, 10,000 miles, 1414 hours
- \* 2002 Honda Foreman Rubicon 4X4 4 wheeler ATV, 14,300 miles, 1392 hours
- \* 1996 Honda Fourtrax 4X4 4 wheeler ATV
- \* Superior Industries 45 gallon Sprayer for side by side, 12 volt, Boom w/hozes and hand wand
- \* 12 volt sprayer for ATV
- \* Set Aluminum ramps for ATV
- \* Cub Cadet RZT42 Riding Lawn Mower, zero turn, 42" cut, 17 HP Kohler engine
- \* White Toro Zero 42" riding lawn mower, bagger, 17.5 HP Briggs engine
- \* 2 White riding mowers, older, may need some TLC

## Internet Bidding Available at

**AuctionTime.com**

**Plan to Attend!!!**

**NOTE:** Items will not be started prior to selling Day of Auction. There will be a "Ride & Drive" inspection times of: Thursday February 8, 2018 from 1-4:00 PM and Monday February 12, 2018 from 1-4:00 PM or contact Rick @ 402-746-3807 or Roy @ 402-746-3823 to set up an appointment.

**TERMS OF SALE:** Cash, Check, Credit Card (with 4% Administration Fee) Day of Auction. Nothing removed until settled for. Merchandise at Bidder's risk after bid off. Information collected on items is our best attempt. Buyers need to inspect and make their own opinion. Owners and Auction Staff not responsible for accident or theft. All Announcements day of sale take precedence over any other statements or advertising. Internet buyers must pre-register with Auctiontime.com Internet buyers will be charged a 2% Buyers Office fee.

**ORCUTT FAMILY PARTNERSHIP, Owners**  
**Rick & Judy Orcutt**  
**Rick's cell 402-746-3807**



**Roy Montgomery**  
1141 Hwy. 78, Guide Rock, NE 68942  
Cell: 402-746-3823 • Home: 402-257-2335  
[info@montgomeryauction.com](mailto:info@montgomeryauction.com)  
**CLICK HERE TO JOIN OUR MAILING LIST**  
[www.montgomeryauction.com](http://www.montgomeryauction.com) • [www.montgomeryauctiononline.com](http://www.montgomeryauctiononline.com)

# AUCTIONS



MARTIN & MARTIN AUCTIONEERS, INC.

**SOUTH CAROLINA**  
**864.947.7888**  
**864.947.7846 - Fax**

SERVING THE AUCTION INDUSTRY SINCE 1973

Martin & Martin Auctioneers, Inc. can say with pride that we have been in the auction business for over thirty-nine years. In 1973, George Martin and his family began with weekend farm auctions. As machine technology increased and the South began to move from farming to industry, the auctions progressed as well. The business has grown and the market has expanded, but many things remain the same. Martin & Martin's strong commitment to the auction industry, as well as an absolute dedication to our buyers and sellers is unwavering. We pride ourselves in knowing that each member of our auction team has excellent business ethics. [www.mmauction.com](http://www.mmauction.com)

**CHECK OUT OUR**  
**ONLINE BIDDING SYSTEM!**

**BID** ONLINE  
powered by  
[www.buymartin.com](http://www.buymartin.com)

• Live Audio & Video • Easy-To-Use

**864.947.7888**

Visit [www.buymartin.com](http://www.buymartin.com)  
and register your Online Bidder account today!



# Your Life's Work Didn't Come Easy.

*Don't settle for outdated methods to liquidate it.*

## **Why Consider an ONLINE ONLY Auction?**

*Weather is not a factor • Fits all buyers' schedules  
Local, Regional & Worldwide Marketing Campaigns*

## **ONLINE ONLY Auction Experts**

*We've sold millions of dollars of both **equipment**  
and **real estate** in 2010 alone.*

*See our proven results on our website!*



**(715) 837-1015**

**[www.HansenAndYoung.com](http://www.HansenAndYoung.com)**



# QUALITY

# EXCELLENCE

# INTEGRITY



*Comly Auctioneers & Appraisers has a deep-rooted tradition of quality, excellence, and integrity since 1834. Throughout several family generations, the company maintain its reputation of reliability, flexibility, and unmatched customer service.*



Phone: (215) 634-2500 – Email: [auctions@comly.com](mailto:auctions@comly.com)

# WWW.COMLY.COM



**National Ag Day: March 20, 2018**

## AGRICULTURE: Food for Life

American agriculture is the foundation of our country. It's the backbone of a healthy and prosperous nation that's made possible by the hard work of America's farms and farm families.

The Agriculture Council of America is proud to celebrate the nutritious and plentiful contributions of our country's farms on National Agriculture Day.

You're invited to join the celebration. Join us for Ag Day 2018.

American agriculture is Food for Life—good for life!

Find out more about high-profile sponsorship opportunities from [jennyp@nama.org](mailto:jennyp@nama.org).

[www.agday.org](http://www.agday.org)

### Ag Day PARTNERS



Hosted by the Agriculture Council of America in recognition of Ag Day.

# AUCTION CALENDAR

AUCTION TITLE	LOCATION	AUCTIONEER	AUCTION DATE	AUCTION TYPE
Orcutt Family Partnership Retirement Farm Auction	Guide Rock, NE	Montgomery Auction & Real Estate	Thu, 02/15/2018	Farm Equipment
Portland Open	Portland, NE	Blackmon Auctions	Thu, 02/15/2018	Farm Equipment
26th Annual Western Kansas Consignment Auction	Garden City, KS	Scott Auction	Mon, 02/19/2018 - Wed, 02/21/2018	Farm Equipment
H.L. Stewart Jr Farms Retirement Real Estate & Equip	Brinkley, AR	Blackmon Auctions	Tues, 02/20/2018	Farm Equipment
Diversified Farm Equipment Auction	Weyauwega, WI	Miller 'N Co Auctions & Appraisals	Thurs, 02/22/2018	Farm Equipment
Consignment Auction	Comlea, NE	Michael Wegener Implement	Thurs, 02/22/2018	Farm Equipment
Michael M. Smith Farm Retirement Auction	Vineland, NJ	Pirrung Auctioneers, Inc.	Sat, 02/24/2018	Farm Equipment
Immokalee Produce Shippers Farm	Immokalee, FL	Demott Auctions	Sat, 02/2/2018	Farm Equipment
Farm Machinery Auction	Hazelton, KS	Hamm Auction & Real Estate LLC	Mon, 02/26/2018	Farm Machinery
11th Annual Huge Inventory Reduction Auction	Mt. Sterling, OH	Green and Sons	Tues, 02/27/2018	Farm Equipment
Special Farm Equipment Retirement Auction for Mark Lemke	Greenleaf, WI	Miller 'N Co Auctions & Appraisals	Tues, 2/27/2018	Farm Equipment Estate Equipment
World Famous Backgate Auction	Stuttgart, AR	Blackmon Auction	Tue, 02/27/2018 - Sat, 03/03/2018	Farm Equipment
Dan & Carol Luebke Farm Retirement	Barney, SD	Steffes Auctioneers Inc.	Thu, 03/01/2018	Farm Equipment

**AUCTIONEERS: HAVE YOUR DATES LISTED (NO CHARGE) IN OUR BI-WEEKLY**



# MyEquipAuctions.com

FARMING DIVISION

AUCTION TITLE	LOCATION	AUCTIONEER	AUCTION DATE	AUCTION TYPE
Major Haying Equipment Auction	Allentown, NJ	Pirring Auctioneers, Inc.	Fri, 03/02/2018	Farm Equipment Hay Auctions
Guzikowski Farms Auction	Wrightstown, NJ	Pirring Auctioneers, Inc.	Sat, 03/03/2018	Farm Equipment
Agricultural Equipment Consignment Auction	Chesterfield, NJ	Pirring Auctioneers, Inc.	Mon, 03/05/2018	Farm Equipment
22nd Annual Winter Auction	Moultrie, GA	Demott Auctions	Sat, 03/10/2018	Farm Equipment
16th Annual Spring Auction	Iron City, GA	Demott Auctions	Sat, 03/24/2018	Farm Equipment
15th Annual S.H.S./FFA Alumni Farm & Construction Machinery Consignment Auction	Sullivan, IN	Jeff Boston Auction Service	Sat, 04/07/2018	Cattle Auctions Farm Equipment
Mike Krejci Farm Retirement	East Grand Forks, MN	Steffes Auctioneers Inc.	Thu, 04/12/2018	Farm Equipment
23rd Annual Citrus, Ranch & Product Special Auction	Okeechobee, FL	Demott Auctions	Sat, 04/21/2018	Farm Equipment

**Click Here For  
All Upcoming  
Auctions!!**